

# Westbourne Green Canalside

## Project Vision

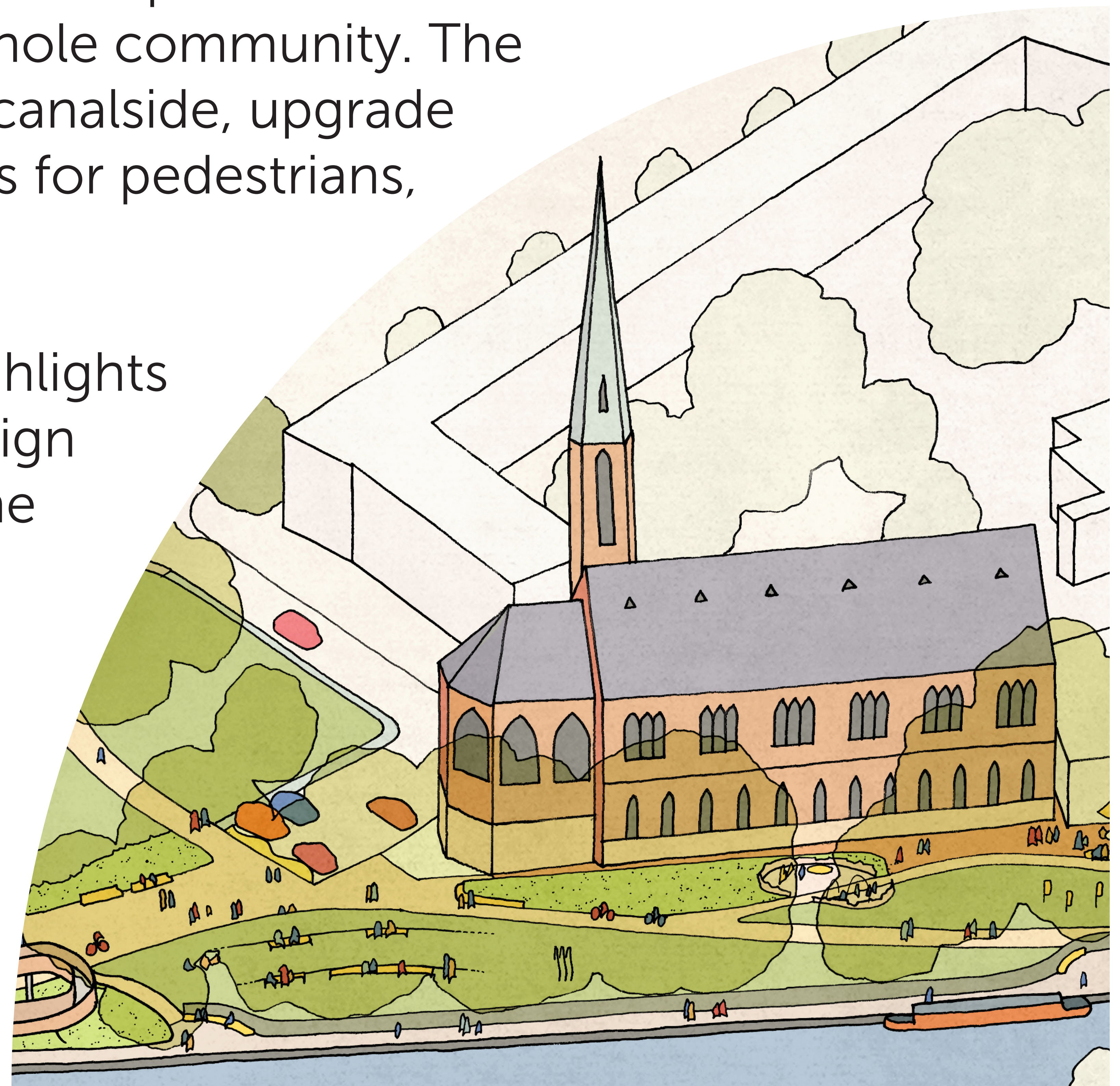
### Westminster City Council is committed to delivering public space improvements

With funding from the Greater London Authority's Good Growth Fund, Westminster City Council commissioned a multi-disciplinary team to design and deliver public space improvements to Westbourne Green Canalside. From 2021, we have engaged with the local community and listened to their priorities, and from this feedback we created a vision for the design. We are now thrilled to share this vision with you and answer any questions you may have about the forthcoming developments.

St Mary Magdalene Church and Grand Junction are already beacons of community; we want the public space that surrounds them to be a natural extension of the community common ground. Our vision is to unlock the potential of the canalside and transform it into a vibrant destination for the whole community. The vision is built on three key objectives: enhance the canalside, upgrade the landscape, and improve connectivity and access for pedestrians, cyclists and wheelchair users.

This exhibition illustrates the future scheme and highlights how we transformed community feedback into design proposals. If you would like to share feedback on the proposal, please do get in touch with us at:

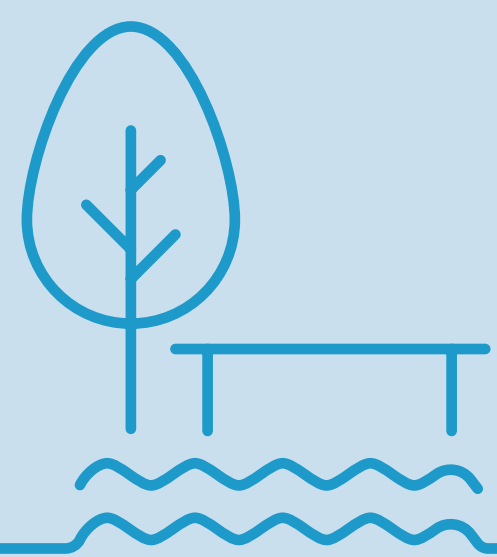
[harrowroad4@westminster.gov.uk](mailto:harrowroad4@westminster.gov.uk)





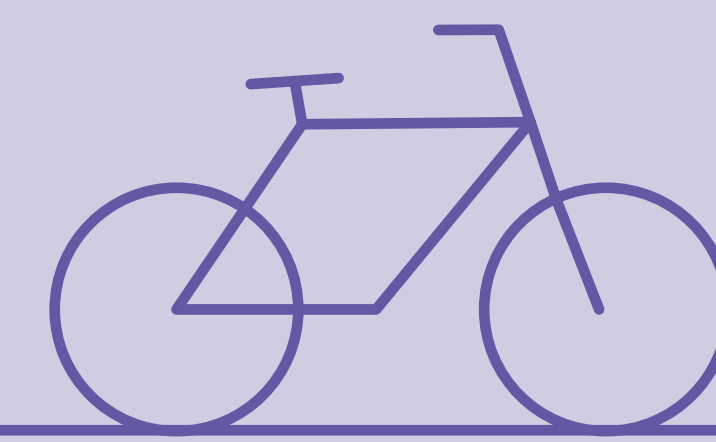
# Westbourne Green Canalside

## Project Objectives



### Enhance the canalside

- 1 Open park up to waterfront
- 2 Remove overgrown shrubbery
- 3 Remove railings where possible
- 4 Create spaces for rest and relaxation



### Improve the connectivity

- 5 Create inviting and well-lit gateways
- 6 Extend pedestrian-only slow route
- 7 Improve the 'shared surface'
- 8 Add signage and wayfinding



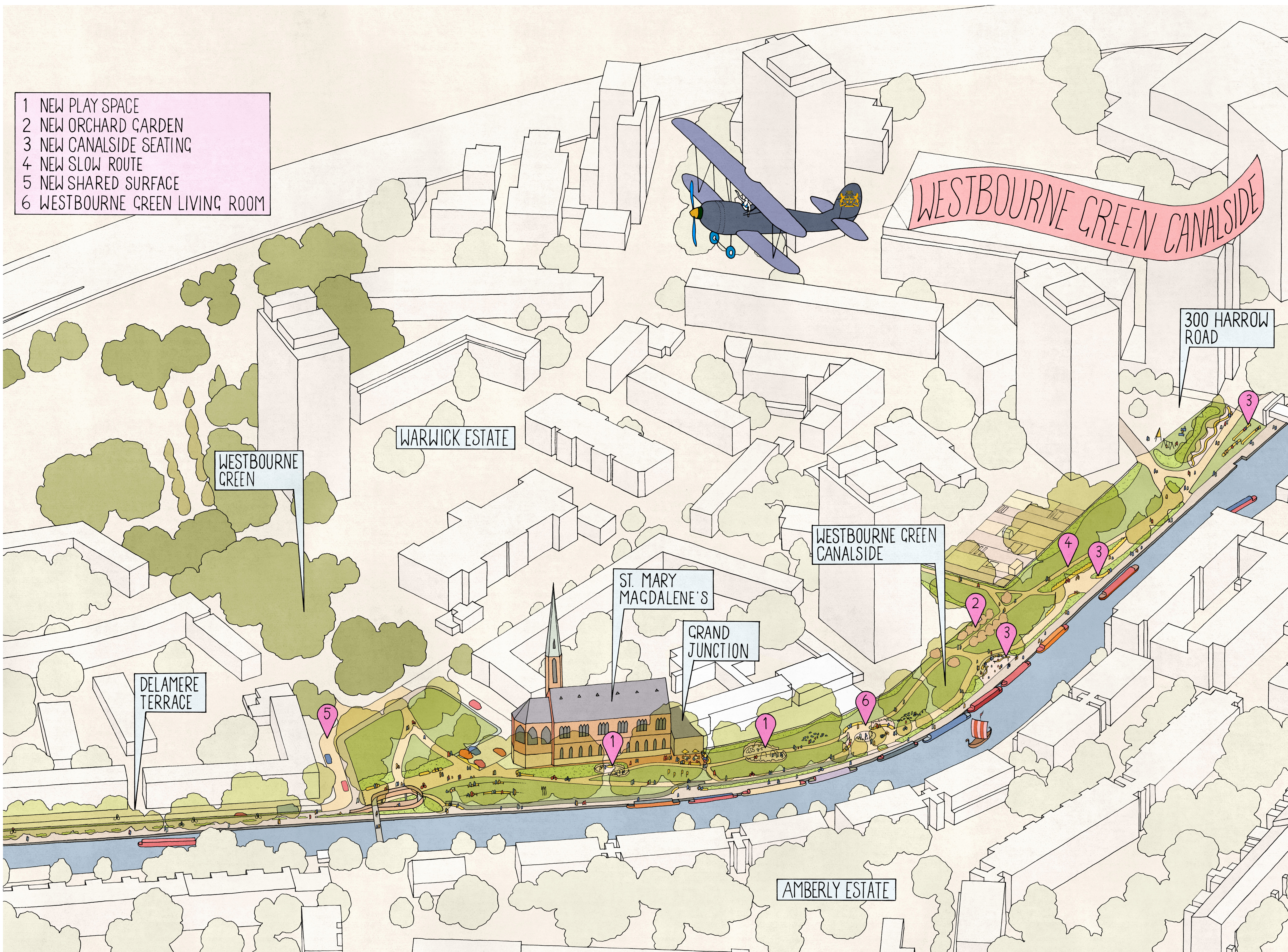
### Upgrade the landscape

- 9 Rewild and increase biodiversity
- 10 Establish fruit trees
- 11 Enable diverse community activities
- 12 Animate south facing lawns



# Westbourne Green Canalside

View of the whole site





# Westbourne Green Canalside

## Statement the Leader of Westminster City Council

*“Public spaces are the common ground where all our residents can meet and play, do exercise or celebrate, or simply enjoy the peace of nature in a busy city.*

*At Westminster City Council, we are committed to making our public spaces safer, cleaner, greener, and more pleasant to walk and cycle in. As part of this commitment, we are transforming Westbourne Green Canalside and the Grand Union canalside into an attractive and fully accessible green-blue spine for the north of the city.*

*The proposal - exhibited here - is based on extensive community feedback, and we hope that you will be able to enjoy the fruits of the designs for generations to come. ”*

**Cllr Adam Hug, Leader of Westminster City Council,  
Westbourne Ward Councillor**



# Westbourne Green Canalside

## Welcoming eastern entrance and additional lighting

Your feedback\*

For further feedback get in touch with us at:  
[harrowroad4@westminster.gov.uk](mailto:harrowroad4@westminster.gov.uk)



Proposed view looking west from Delamere Terrace to Lord Hills Road and Westbourne Green Canalside.

*\*These callouts represent the community feedback we have received thus far and designed for.*



# Westbourne Green Canalside

New canalside living room with comfortable seating

Your feedback\*

For further feedback get in touch with us at:  
[harrowroad4@westminster.gov.uk](mailto:harrowroad4@westminster.gov.uk)



Proposed view looking east along renewed cycle and pedestrian walkway with new seating.

*\*These callouts represent the community feedback we have received thus far and designed for.*



# Westbourne Green Canalside

Distinct paths for pedestrian and cyclists

Your feedback\*

For further feedback get in touch with us at:  
[harrowroad4@westminster.gov.uk](mailto:harrowroad4@westminster.gov.uk)



Proposed view looking east showing removal of railings between Westbourne Green Open Space and canal towpath.

*\*These callouts represent the community feedback we have received thus far and designed for.*



# Westbourne Green Canalside

Spaces to rest and relax along the canal

Your feedback\*

For further feedback get in touch with us at:  
[harrowroad4@westminster.gov.uk](mailto:harrowroad4@westminster.gov.uk)



Proposed view looking east with new bleacher seating facing the canal.

*\*These callouts represent the community feedback we have received thus far and designed for.*



# Westbourne Green Canalside

Increased biodiversity and fruit trees

Your feedback\*

For further feedback get in touch with us at:  
[harrowroad4@westminster.gov.uk](mailto:harrowroad4@westminster.gov.uk)



Proposed view looking east showing fruit tree lined walkway, secondary walking route.

*\*These callouts represent the community feedback we have received thus far and designed for.*



# Westbourne Green Canalside

New landscaped play spaces for children

Your feedback\*

For further feedback get in touch with us at:  
[harrowroad4@westminster.gov.uk](mailto:harrowroad4@westminster.gov.uk)



Proposed view looking west showing new play equipment and extended hard surface near Grand Junction. Bleacher seating on south facing slope.

*\*These callouts represent the community feedback we have received thus far and designed for.*



# Westbourne Green Canalside

## Enhancements in front of Grand Junction & café

Your  
feedback\*

For further feedback get  
in touch with us at:  
[harrowroad4@  
westminster.gov.uk](mailto:harrowroad4@westminster.gov.uk)



Proposed view looking east showing enhanced setting to Grand Junction and Community Noticeboard.

*\*These callouts represent the community feedback we have received thus far and designed for.*



# Westbourne Green Canalside

## Introducing shared spaced along Delamere Terrace

Your feedback\*

For further feedback get in touch with us at: [harrowroad4@westminster.gov.uk](mailto:harrowroad4@westminster.gov.uk)



Proposed view of raised section of Delamere Terrace looking west showing new shared space and canal towpath.

*\*These callouts represent the community feedback we have received thus far and designed for.*