

Westbourne People



BULLETIN
April 2012

Westbourne Forum Board & Members



Jason
Swerling

The board of Westbourne Forum is made up of local residents, councillors and representatives from community organisations and other bodies. The board meet roughly once every month to find out what has been happening in Westbourne and discuss local issues.



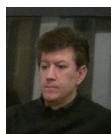
Lawrence
Harrault

Residents on the Warwick estate are represented by Father Henry Everett and Maggie Kennedy. Residents living on the Amberley estate and nearby roads are represented by Hasna Kahlalech and Krassimir Damianov. Residents to the north of the ward are represented by Lawrence Harrault and those in Great Western Road by Jason Swerling.



Hasna
Kahlalech

Other organisations that form part of the board include the Westbourne Park Family Centre, African's Women's group, Westminster Academy, CityWest Homes and Westminster Council. The board have begun planning two community events that will be a focal point to bring local Westbourne residents together this summer. This involves developing ideas, linking up with other organisations and fundraising.



Krassimir
Damianov

The board have also been thinking about the future of Westbourne in the changing context of community governance. Central government is creating new ways for local communities to shape development in their areas. In line with this Westbourne Forum is planning an application to be one of the new 'neighbourhood forums'. This means a representative group that considers what the neighbourhood needs.



Update from Westminster Academy Garden

If you have been walking along Alfred Road or towards the railway footbridge, you will have noticed that work is being done on the garden at Westminster Academy. Since last August, local resident volunteers have been growing vegetables, fruit, trees and flowers and generally improving the look of the green space.



Here's a shot of how it looked before



And here's a shot of how it looks today

Things have really begun to change again after a quiet winter. Funding of £450 from Capital Growth has purchased new tools (including a much needed wheelbarrow!) and hundreds of different seeds and plants. A day of corporate volunteering from DECC in March saw the garden being transformed with new hedging, an outdoor classroom, raised beds and a mural, which has brightened it up just in time for the new growing season.

We are always looking for new volunteers, so if you want to learn about organic gardening or just want to get some fresh air, you are very welcome! Please get in touch with Charlotte Head to find out when we will next be there.

Contact charlotte@pdt.org.uk or 0207 266 8252

Summer in Westbourne, Save the dates!!!!!!

Please join us for our two community events this summer. We are holding a Big Lunch picnic on **Sunday 3rd June 2012**, to celebrate the Queen's Jubilee. Bring some food to eat or share, and play games on Westbourne Green.

And join us for the Westbourne Olympiad, a fun family day of sports, games and activities on **Sunday 15th July 2012**, in Westbourne Green. Watch this space for more information!

Step Up 2 Fitness

Step Up 2 Fitness is a women's fitness project that has been a runaway success, providing fitness classes twice a week for around fifty women from the local area, and is particularly popular with Arabic speaking women.

The classes have been taking place without much fuss in Westbourne for 3 years, and you might not have even heard of it! But in the current financial climate, securing ongoing funding for the classes has been proving increasingly difficult.



We are pleased to announce that we have received some funding from NHS Westminster that will see the project continue for another 9 months. Hasna who coordinates the project says 'Step Up 2 Fitness is a really important project because for many women it is the only exercise they take part in. Many women don't want to go to gyms that are mixed and often too expensive. Women that come here make friendships and support one another to get fitter'.

Competition Time

For your chance to win a £15 gift voucher, answer the following question about St Mary Magdalene's Church.

Question

St Mary Magdalene's Church (Rowington Close W2 5TF) has this statue erected outside, at the bottom of it there are two dates, if you were to add the two dates together what would the total be? (Please circle your answer)



Answer: A: 3830 B: 3832 C: 3834

Please hand in your answer at the Stowe Centre reception
258 Harrow Road, London, W2 5ES.

The winner will be drawn on 1st May 2012

Name: _____

Address: _____

Contact Number: _____

CrossRail Update

Work on the Crossrail project at Royal Oak is steaming ahead. The two tunnel boring machines are finished and begin tunnelling in March this year.

They will work around the clock, and will take 15 months to tunnel to Farringdon, where they meet the machines that will have tunnelled from Stratford. The concrete sections that will line the tunnel as it is built will be brought to the area by lorries travelling down Harrow Road and Great Western Road.

A substation to power the tunnel borers will be built under the Westway over the road from Royal Oak station, taking up about 40% of the space, and will in place for 15 months. Crossrail state that the work that is currently going on to strengthen Lords Hill Bridge (hence the shut pavements and one way system) will continue until this spring.

Crossrail insist that they will be working hard to minimise any disturbance to Westbourne residents during the project. However since Westbourne will be the centre of work for another two years there may well be issues. Andy Fletcher, Community Liaison Advisor at Kier, one of the main contractors, stressed that residents should not hesitate to get in touch with any comments, complaint or questions at any time.

He can be contacted on 0207 960 6042 or andy.fletcher@kier.co.uk



The Tunnel Boring Machine (TBM) and a crossrail worker standing in one of the portals



Tel: 020 7266 8221 www.westbourneforum.org.uk